

Ideal for:
Small Open Pit Mines / Quarries
Underground Mines
Tyre Service
Ports
OEM

Easy Gripper 2400-2T

Save
time
Improve
safety



Professional tools for handling of OTR/EM tyres up to 37.25R35

- Unique 3-point grip
- Precise rotation +/-25°
- 90° tilt, horizontal to vertical
- Integrated camera system for optimal view
- Prevent damage to tyres, rims & equipment
- Tools for safe handling of tyre rings
- Easy hook on/off attachment



Experts in Tyre Handling Equipment



Easy Gripper

The Easy Gripper product range is designed to help professional tyre technicians in a multitude of conditions and situations. Implementing The Easy Gripper makes tyre handling faster and safer, while preventing damages to tyres, rims and equipment.

Capability

With a gripping range of Ø850 - 2.400 mm (34 - 94") and a lifting capacity of 2 ton (4.400 lbs) at a CoG of 550 mm (22") from face of gripper, the Easy Gripper 2400-2T can handle tyres up to 37.25R35. When handling full wheel assemblies as inside duals, the Gripper handles up to 24.00R35 tyres.



Underground mines

Solves issues with limited clearance around the tyres. The 2 bottom pipes grip the tyre below the fender, and the top pipe can easily be changed to a flat arm to fit between tyre and fender.

Quarries

The unique 3-point grip, precise tilt and rotation, integrated camera system and special designed Ring Handling Tools all improves the safety as well as the efficiency while handling tyres and wheels.

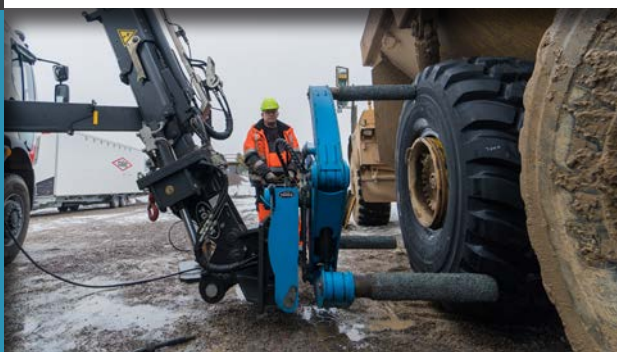


Ports

Reduces the down time and improves the safety for the tyre technicians while handling tyres and wheels on Straddle Carriers, Reach Stackers, AGVs and RTG cranes.

Breakdown service

Mounted on front loaders, telehandlers or truck cranes you get a perfect and safe solution to provide tyre service in any environment with just one or two operators ... faster than usually.



Forklifts



The Easy Gripper 2400-2T with the 90° tilt module is ideal for use on forklifts.

Front loaders and telehandlers



The Easy Gripper 2400-2T Compact without tilt or with the 30° tilt module is a good choice depending on the tilt provided by the carrier.

Truck cranes



By use of our Crane Module the Easy Gripper 2400-2T Compact also fit with almost any truck crane system.



Standard features

Unique and safe 3-point grip

- Prevents accidents.
- Prevents deformation of tyres.
- Prevents damages to tyres, rims and equipment.

Integrated camera system for optimal view

With automatic IR function in insufficient lighting conditions.

Precise rotation +/-25°

90° tilt, horizontal to vertical

Quick Shift Module

A mandatory and integrated part of the Easy Gripper 2400-2T. It is mounted on the forklift, and the Easy Gripper is then hooked on to this module. Makes hook on/off easy.

Optional accessories

Fork Module

The Fork Module is designed to be hooked on to the Quick Shift Module and makes quick shift between Gripper and forks easy.

Hydraulic Multi Connection

To optimize quick shift of the hydraulic hoses in less than a minute.

Easy shift of gripping pipes for various purposes

- Telescopic pipes for long reach, to provide room for the tyre fitter and for dual tyre handling.
- Flat top pipe for limited clearance.

Ring Handling Tools

Enables the tyre fitter to handle Locking Rings, O-Rings, Side Rings and Bead Seat Bands in a safe and secure manner.

RIM Handling Tools

The RIM Handling tools are yet a safety and efficiency add-on to the Easy Gripper program and improve the handling of OTR rims.

LED working light

Second camera for view of bolt diameter

Customization on request



Integrated camera system for optimal view



Optional second camera for precise bolt alignment



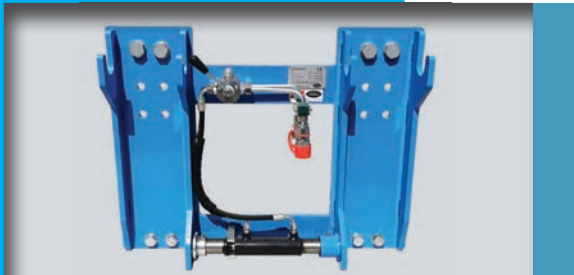
Optional LED working light



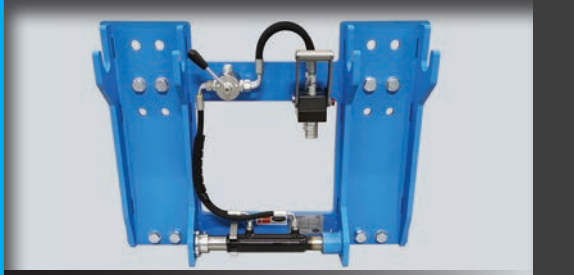
Unique and safe 3-point grip



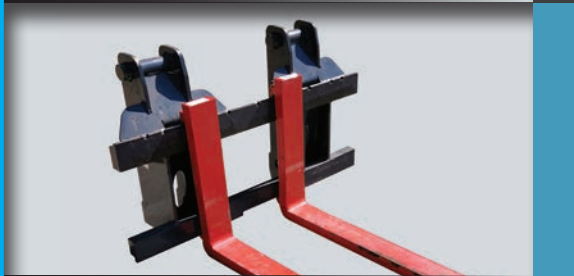
Tools for safe handling of tyre rings



Quick Shift Module - screw coupling



Quick Shift Module - hydraulic multi connection



Fork Module



Flat top arm for limited tyre clearance



Telescopic pipes for long reach

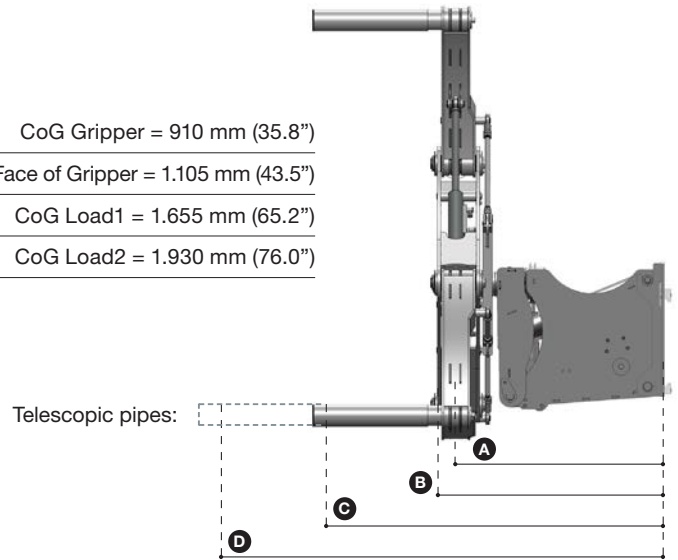


Safe handling of rims

Technical Specifications:

Weight:	Gripper = 815 kg (1,796.6 lbs)
	Quick Shift Module = 75 kg (165.4 lbs)
Lifting capacity:	2.000 kg (4.400 lbs) at C from B 550 mm (21.7")
	1.425 kg (3.142 lbs) at D from B 825 mm (32.5")
Tyre diameter:	850 - 2.400 mm (33.5 - 94.5")
Standard pipes:	Ø140 x 600 mm (5.5 x 23.6")
Telescopic pipes:	Ø152.8 x 600 -> 875 mm (6 x 23.6 -> 34.5")

- A** CoG Gripper = 910 mm (35.8")
- B** Face of Gripper = 1.105 mm (43.5")
- C** CoG Load1 = 1.655 mm (65.2")
- D** CoG Load2 = 1.930 mm (76.0")



Technical Requirements:

Lifting capacity:	Minimum 4.5 ton depending on carrier
Attachment:	ISO/FEM/ITA Class 3 or 4 / Loader specific
Electrical supply:	24V / min 10A
Hydraulic supply:	1 double acting circuit (A+B port)
Pressure min-max:	150 - 250 bar (2.175 - 3.626 psi)
Return pressure:	max. 10 bar (145 psi)
Flow:	max. 50 l/min. (13 gal/min.)

Authorized Dealer



+45 72 344 344
 info@justeasytools.dk
 www.justeasytools.com
 VAT no.: DK33644809

Just Easy Tools ApS
 Nybovej 33
 7500 Holstebro
 Denmark